

「ENGAGE」





## TABLE OF CONTENTS

---

7	THE MANY THREES
8	MILESTONES
11	ENGAGE OVERVIEW
18	WHY GENEROSITY?
21	FAQ







3Circle Church Family,

The story of our church is an amazing sixteen-year journey. It speaks loudly of God's faithfulness, allowing this local body of believers to make an eternal impact within our communities and our world. Like any journey, this one has been filled with good times and tough times, highs and lows. But, throughout the chapters of 3Circle, we have witnessed continued growth and impact. We are all humbled and grateful that God has chosen to bless our church, and to use us in reaching the world.

We believe it is time to write the next chapter of 3Circle Church. In the pages of this book, you will find the plan for the future of our church. It is part of a church-wide comprehensive initiative, called ENGAGE. As our church and community continues to grow, we must be prepared for this next chapter. Included in these pages are highlights of the impact of our church, plans for next steps, and ways in which you and your family can ENGAGE.

Our vision as a church hasn't changed; in fact, it is that vision that compels us to intentionally take steps to ensure the next chapter of 3Circle is even greater than its past. The Gospel of Jesus is GOOD NEWS to all, and we want to continue to be a church that does all that we can to lead people to a growing relationship with our great Lord. So I'm inviting you to open your heart and your mind. Join us in anticipation of the future that God has for us. Join us as we fully ENGAGE!



Pastor Chris



## COMMON THREADS

3Circle Church began in the year 2000, as “Church on the Eastern Shore,” planted by a small group of people who were fiercely dedicated to serving our community and leading as many people as possible to Jesus. God was clearly at work, beginning a movement that continues to this day.

The faithfulness of God and the generosity of His people have been common threads throughout the years, as our sphere of opportunity continues to expand around us. We have been privileged to carry the Gospel to our neighbors, and across the world - all with the aim of heeding Jesus’ call to make disciples.

“You will receive power when the Holy Spirit comes on You; and you will be my witnesses in Jerusalem, and in all Judea and Samaria, and to the ends of the earth.” [ Acts 1:8 ]

---

**WE ARE A CHURCH ON MISSION**  
LOCAL | REGIONAL | GLOBAL

## THE MANY THREES OF 3CIRCLE

Though 3Circle's name comes purely from the mission Jesus gave us, there are several sets of threes that shape who we are.

### MISSION (what)

To lead people to a growing relationship with Jesus –  
LOCALLY, REGIONALLY, & GLOBALLY [ Acts 1:8 ]

### VISION (how)

Reaching Up (worship)  
Reaching In (grow)  
Reaching Out (share)

### DISTINCTIVES

#### *Gospel-Driven*

The life-changing Gospel of Jesus is the thrust behind all we do. (Rom. 1:16)

#### *Christ-Centered*

We worship a triune (3 in 1) God, with Jesus as our Savior. (John 1:14; Col. 1:15-20)

#### *Community-Focused*

We were made for biblical community. (1 Cor. 12:12)

### LEADERSHIP VALUES (for all who serve at 3Circle)

Character: passionately pursuing lives of integrity, built on biblical truth

Excellence: consistently giving our best, as we serve God and others

Unity: selflessly embracing our shared vision, as we honor our leadership, our team, and those we serve

# 3CIRCLE MILESTONES

**2000**

A growing bible study in Baldwin County became Church on the Eastern Shore (COTES), launched by about 50 people in a borrowed day care facility in Daphne.

**2005**

Phase 1 of the current main building was built to accommodate the rapid growth of our church.

**2010**

We launched our first additional campus in Thomasville, and began weekly ministry at Life Tech Transition Facility. This same year, we opened the Hope Center clinic in Fairhope.

**2002**

Following a merger with another existing church, COTES acquired its first permanent facility and property, in Fairhope.

**2008**

Phase 2 of construction was completed, including the current worship center and South preschool hallway.





**2012**

Pastor Chris Bell became Lead Pastor of COTES.

**2014**

3Circle stepped into “church revitalization,” partnering with local Baptist associations in an effort to revitalize existing churches in our area who were struggling. Church campuses were launched in Semmes and Midtown Mobile, as well as a branch of our Hope Center in Midtown.

**2016**

Following a successful launch of the E.S.-North campus, 3Circle’s original campus (now known as E.S.-South) continues to grow as rapidly as ever. Our leadership, known for their wise and thoughtful stewardship of current facilities and resources, unanimously approved a plan to move forward with building/renovating facilities at both Eastern Shore campuses.

**2013**

Church on the Eastern Shore became “3Circle Church,” a name that more clearly reflects our mission.

**2015**

After many other attempts to accommodate growth at our Eastern Shore campus, we merged with yet another existing church, this time just five miles away, and launched our Eastern Shore-North campus, with over 500 people in attendance.



## CURRENT HIGHLIGHTS

3Circle has been recognized three times as one of the 50 fastest-growing churches in America, with attendance growing to over 3,600 people.

---

We are privileged to see hundreds of people saved and baptized each year, including over 500 baptisms in just the past three years.

---

Our Eastern Shore campuses are positioned in the fastest-growing county in the state of Alabama (4 times the state/national growth averages), and our surrounding area (local circle) is the 8th fastest-growing area in the entire country.\*

---

Our Hope Center locations are some of the only clinics of their kind in our region, offering medical care, dental care, and counseling to uninsured and under-insured residents. In 2015 alone, we offered health care and the hope of the Gospel to over 3,000 patients.

---

Hundreds of marriages have been renewed and strengthened through our True Marriage LIVE ministry and quarterly events, which feature environments tailored to connection, and Gospel-centered teaching on marriage.

---

3Circle Music was formed to harness the “voice” of 3Circle, and has led to the release of two original albums and other special projects.

---

We have had the opportunity to minister to incarcerated men at Life Tech transitional facility on a weekly basis for the past six years, typically 100-150 men each week; we are also involved monthly at the Loxley Work Release training camp, ministering to about 50 inmates at a time.

---

Camp 3Circle has become one of our most impactful efforts every year, as we welcome well over 500 children onto our campus for a week of biblical teaching, powerful worship experiences, and exciting activities.

---

The people of 3Circle continue to be incredibly responsive to our work in other countries; in addition to the large financial investment we make in these places, we have over 150 people directly involved in going on short term mission trips overseas each year.

*\*Stats courtesy of  
Baldwin County Economic  
Development Alliance*





## ENGAGE:

verb.

1. to become involved in/participate in (we all have a part to play)
2. to attract/occupy the attention of others (reaching all three circles)
3. to interlock, as gears do (unity of vision and focus)

As we step into an exciting new chapter of our story, we do so with unified vision and purpose: to continue to reach our local, regional, and global circles. And with some intentional overlap of our circles, our 2-year ENGAGE initiative will specifically aim to engage our church, our communities, and our world.

# THE IMPACT OF ENGAGE



## OUR CHURCH

Serving those who are here, and planning for those who will be here

### **EASTERN SHORE- SOUTH CAMPUS:**

Larger worship space to meet our current and future needs

New common areas to improve flow of people/allow space for connection

Expanded children's areas, with increased security measures as our first priority

Additional parking

---

### **EASTERN SHORE- NORTH CAMPUS:**

New common areas to improve flow of people/allow space for connection

Expanded/improved parking

### **MIDTOWN:**

Upgraded/renovated facilities

Expanded/improved parking

---

### **THOMASVILLE:**

Facility relocation

---

### **SEMME:**

Upgraded/renovated facilities

Expanded/improved parking

---

\*Money raised at each campus will remain there to advance the Kingdom, locally.



## OUR COMMUNITIES

Offering hope and help to our neighbors, through efforts/partnerships, such as:

Hope Center - our very own medical, dental, and counseling clinics

Women's Care Medical Center - financial support and awareness

Life Tech Transition Facility - weekly Sunday gatherings for inmates

Loxley Work Camp - monthly ministry gatherings for inmates

Prodissee Pantry - food collection, hands-on assistance

Foster care and adoption assistance - financial and hands-on support

Refuge for Women - financial support, facility maintenance

Campus Outreach at local universities - financial and hands-on support

Ridden Word Bike Ministry - financial and hands-on support

Christian Surfers, local chapter - financial support and weekly leadership/discipleship



## OUR WORLD

Short-term mission trips around the world, in addition to deep involvement in places like:

Las Vegas, New York City, Houston: church plant financial support/partnerships, short-term mission trips

Honduras: year-round medical clinic, full-time missionary support & church partnership, multiple trips each year to minister through medical care, dental care, and local worship ministry development

Costa Rica: multiple church campuses, pastoral training/mentoring, sponsorship of annual Christian Surfers competition, full-time missionary support, short-term trips

Guatemala: feeding center, year-round medical clinic, full-time missionary support, short-term trips

India: ongoing work with special needs orphans, dentistry, full-time missionary support, short-term trips



# THE COMING YEARS...

We now stand at the outset of an exciting new season in the life of 3Circle Church! Our ENGAGE generosity initiative will be a huge endeavor, one that relies on every part of the living body that we call the “church” to be fully engaged, involved, and responsive.

Over the next two years, it will require \$16.5 million for 3Circle to fully mobilize this initiative. This number includes current operating expenses, as well as additional dollars to fund the expanded vision God has given us.

While the Christian life extends far beyond the walls of our physical structures, we also see amazing things happening every time our doors are open, as God uses us to connect people with Him, and with each other! We believe that our buildings should not only allow sufficient room for people to assemble, but should also allow room for true, unhurried community and connection. And while we are very thankful for what we have, the reality is that we have outgrown our current facilities at our Eastern Shore campuses, causing misalignment with our vision to welcome people and foster community. In an effort to regain the margin for connection, we will actually build bigger to feel smaller. We are confident that in doing so, we will allow our people more opportunity to grow in relationship, and will also create space for the untold thousands of people yet to come.

Another aspect of the necessity for building/renovation involves our commitment to utmost security and care for our children. This initiative will eliminate the need to transport children between multiple buildings at our South campus, bringing everyone “under one roof,” with state of the art facilities and security measures.

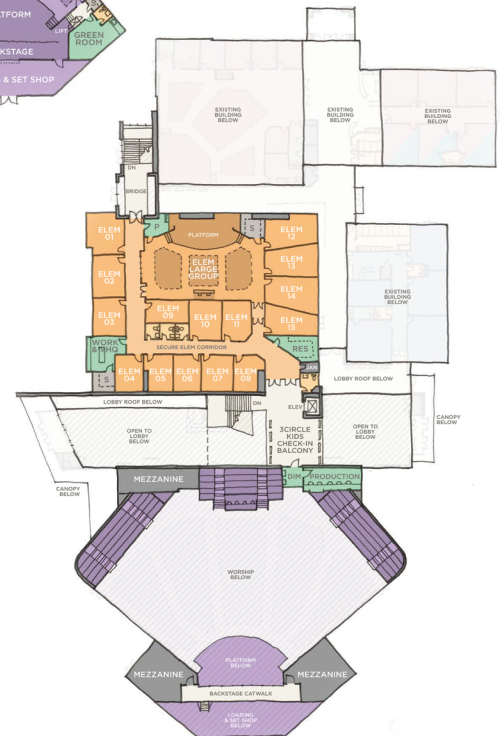
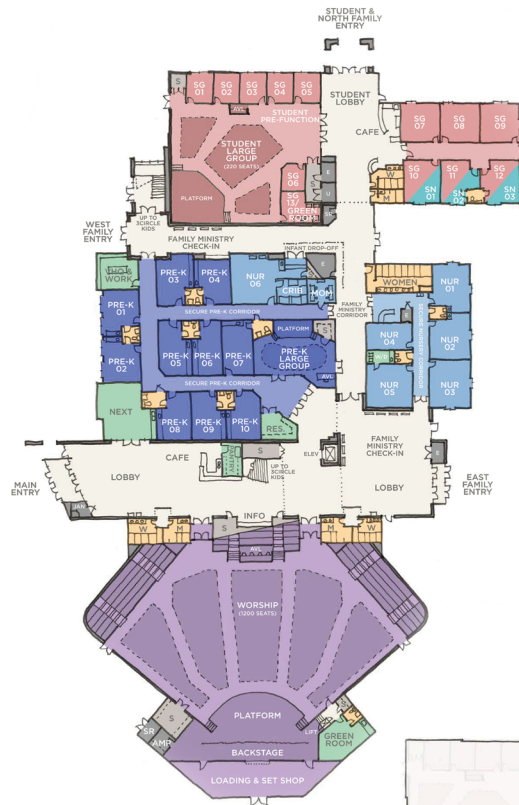
# WHY NOW?

It is important that we quickly move forward with this initiative, because of what is happening now, and what will happen next. “NOW” - We are unable to properly accommodate the current number of people at our Eastern Shore campuses, often resulting in overcrowded adult, children’s, and common areas, and even the reality of families leaving after not being able to find seats in our gatherings. “NEXT” - We are blessed to be located in the fastest growing county in the state; with residential and economical projections for the future at all-time highs, we are poised for unbelievable opportunity, ministering to untold thousands of people, yet to come.

The next few pages will give more detail about our plans for building and renovation, as well as opportunities for your involvement and support, so you can be a part of fully engaging in the mission and vision of 3Circle.

KNOW FEAR

Additional parking





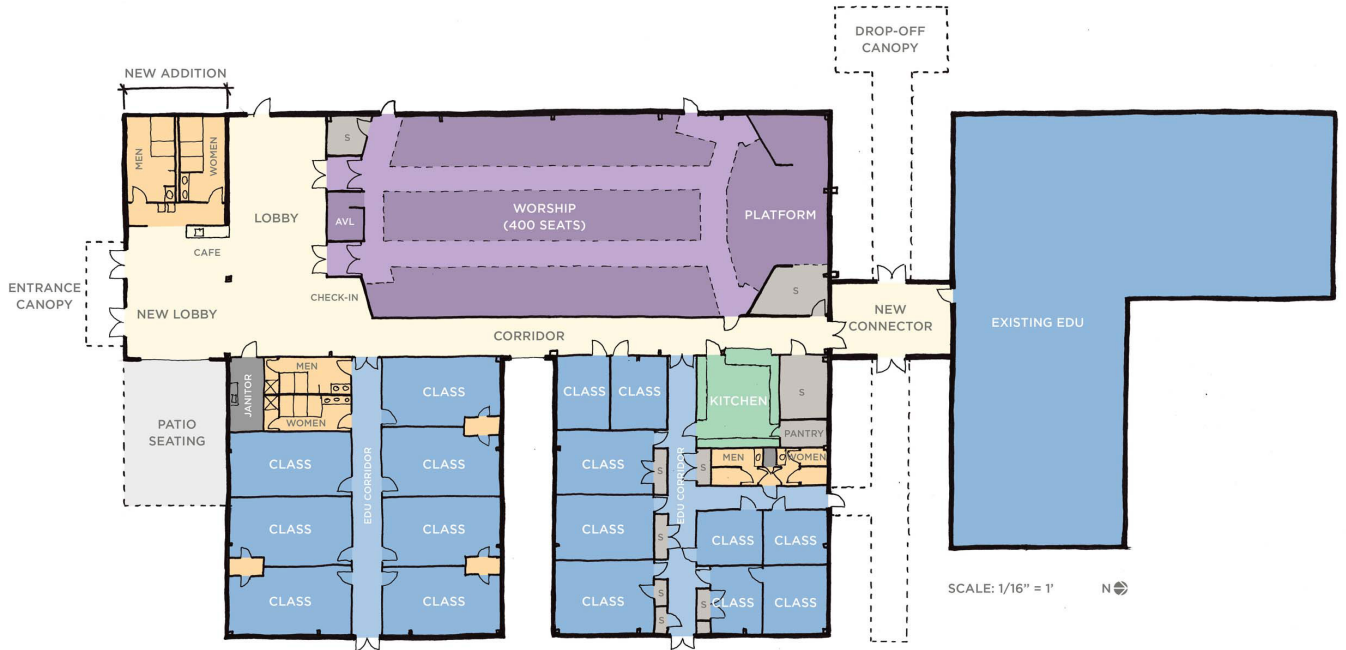
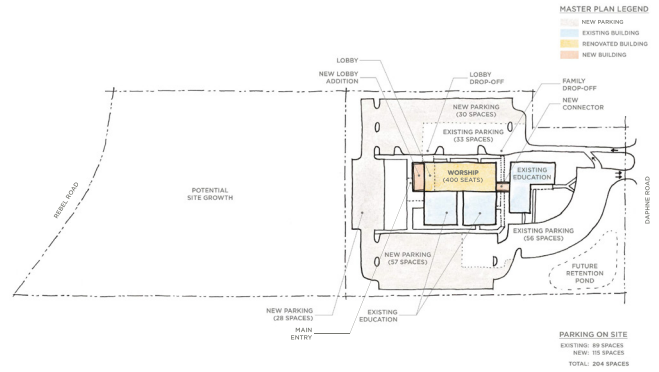
# NORTH CAMPUS PLANS

New common areas to improve flow of people/allow space for connection

Additional restrooms

Upgraded entrances and outdoor area

Expanded/improved parking





# WHY GENEROSITY?

Generosity is really the “hidden gem” in the process of disciple-making. Think about it; there is very little we do that does not require some type of financial decision. Do we go out to eat; do we grab a Starbucks on the way to work; do we buy the newest and more expensive athletic shoes or the ones from the clearance rack; do we buy a new car or a used car? If we’re honest with ourselves, we would all likely agree that we’ve experienced the allure of money at some point in our lives.

For this reason, Jesus spoke often on the topic of our treasure or possessions, our attitude about our possessions, and in the end, who really owns everyone’s possessions. We only need to look to the story of the rich young ruler (Matthew 19:16-22) to realize that the stewardship of our resources is very important.

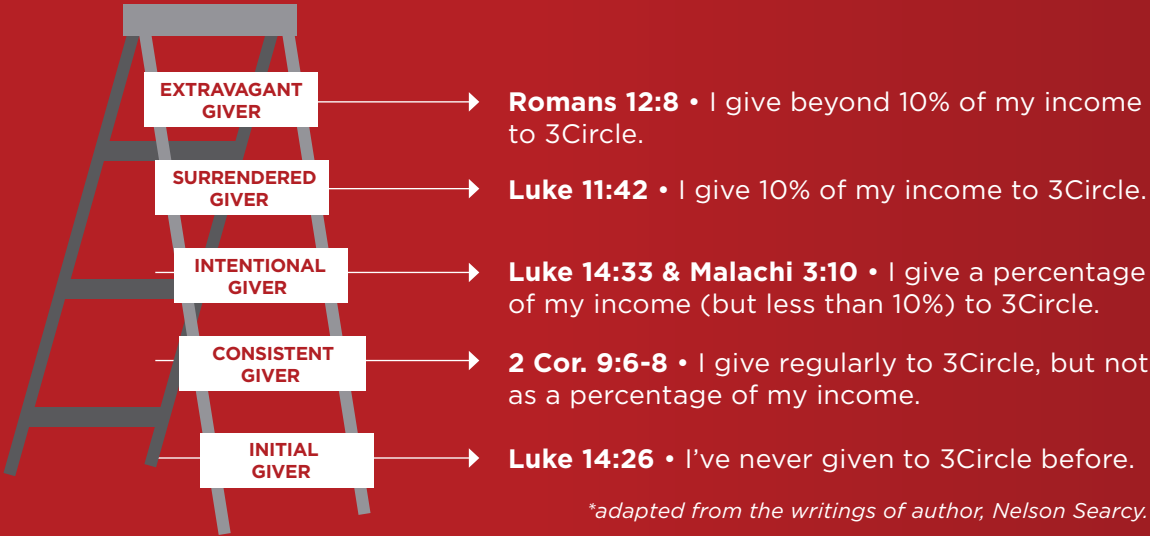
Throughout ENGAGE, we will talk a lot about generosity. It is important to understand that generosity impacts much more than just our money. Generosity is a by-product of our spiritual transformation. Jesus, who we know had little in the way of possessions, was the most generous person to ever live. The stronger our relationship with Jesus grows, the more generous we become. Generosity is, without a doubt, a matter of the heart.

The Generosity Ladder on the next page is a tool designed to help us think more about our generosity journey. To move up this ladder is an intentional effort that starts with a transformation of the heart. Climbing this ladder is not about us. Rather, moving up the ladder is an exercise that brings us closer to God.

As you look at and think about this ladder, ask yourself, “Why is my generosity important to God?”

# GENEROSITY LADDER

Imagine the potential if all of 3Circle took a step up the ladder to increase their generosity. Together, let's believe in Jesus to help us ENGAGE people with the hope of the Gospel. Your generous giving is changing lives!



Below is a tool to help you think through your commitment to ENGAGE.

	PROPORTIONAL			TITHING	EXTRAVAGANT	
Percentage of income	3%	5%	8%	10%	12%	15%
Weekly (52x year)	\$29	\$48	\$77	\$96	\$115	\$144
Bi-Weekly (26x year)	\$58	\$96	\$154	\$192	\$230	\$288
Monthly (12x year)	\$125	\$208	\$333	\$417	\$500	\$625
Quarterly (4x year)	\$375	\$625	\$1,000	\$1,250	\$1,500	\$1,875
Total Annual Giving	\$1,500	\$2,500	\$4,000	\$5,000	\$6,000	\$7,500
Total 2-year Giving	\$3,000	\$5,000	\$8,000	\$10,000	\$12,000	\$15,000

*Based on a \$50,000 annual income*

# MAKING A COMMITMENT TO ENGAGE

**GIFT CHART:** This represents the generosity needed to attain our ENGAGE goal.

Goal: \$16,500,000				
Gifts Needed	Gift Level	Annual Gift	Monthly Gift	Gift Level Total
1	500,000	250,000	20,833	500,000
2	350,000	175,000	14,583	700,000
8	250,000	125,000	10,417	2,000,000
15	150,000	75,000	6,250	2,250,000
16	100,000	50,000	4,167	1,600,000
18	50,000	25,000	2083	900,000
25	30,000	15,000	1,250	750,000
40	25,000	12,500	1,042	1,000,000
75	20,000	10,000	833	1,500,000
85	15,000	7,500	625	1,275,000
125	10,000	5,000	417	1,250,000
150	7,500	3,750	313	1,125,000
175	5,000	2,500	208	875,000
200	2,500	1,250	104	500,000
250	1,000	500	42	250,000
Many	Up to 1,000			

As you prayerfully consider how God is calling you to ENGAGE, use this tool to think about your commitment. Ask Him to make it clear. Ask Him to help you. We encourage you to pray and to expect God’s blessings, when you follow His lead.



# **FREQUENTLY ASKED QUESTIONS**

### **WHAT IS ENGAGE?**

ENGAGE is the theme for 3Circle's 2-Year Generosity Initiative (November 2016- November 2018); through this initiative, we are seeking to accommodate continued rapid growth, and to encourage community and connection. This will include building/renovating facilities at our Eastern Shore campuses. We will "build bigger to feel smaller."

---

### **HOW MUCH WILL IT COST?**

We anticipate a total need of \$16.5 million, which will fund ongoing ministry, as well as the expanded vision that God has given us for the years to come.

---

### **WILL WE GIVE SEPARATELY TO ENGAGE, IN ADDITION TO REGULAR GIVING?**

No. The ENGAGE initiative utilizes a One-Fund approach. Our operating budget and expanded opportunities will all fall under the same umbrella, thus our single financial goal. Therefore, there will be no need to specifically designate any portion of your giving to ENGAGE.

---

### **WILL WE ADD DEBT?**

Yes, but our intent with the ENGAGE initiative is to minimize the amount of debt-load we are carrying, as we move forward in the direction God leads.

---

### **IS THIS PART OF A "PHASED PLAN"?**

No, the planned construction will not be separated in disconnected "phases." Instead, we will build and renovate, continuously, in a manner that promotes efficiency and best utilizes our current facilities while we are building.

---

### **WHEN WILL CONSTRUCTION/RENOVATION BEGIN?**

We plan to break ground in Fall 2017.

---

### **WHY DO WE NEED TO MAKE ALL OF THESE CHANGES NOW?**

God has placed us in the midst of the fastest growing county in the state (and 8th fastest growing area in the nation)! We have already outgrown our current facilities; it is important that we move quickly to best serve those whom we are reaching now, as well as the untold thousands to come in the future! We are a church on mission, and our mission has led us to this point. If not now, when? If not us, who?



